

P200 & P260

Palm Recognition Multi-Biometric T&A Terminal with Access Control Functions



P serial is a multi-biometric identification time & attendance and access control terminal, which can connect with third party electric lock, door sensor, and exit button etc.

With the latest palm/fingerprint identification algorithm and streamlined technology, it can hold 600 palm templates and up to 10,000 fingerprint templates without dividing into groups.

Communicating via Wi-Fi, TCP/IP, and USB host, it ensures a smooth connection and data transfer. Amazing verification speed and intuitive operation process make it popular. Elaborately designed and finely processed, it matches your slap-up office perfectly.

Features



Build in PoE



1 channel auxiliary input for smoke detector connection



Build in battery, upto 4 hours



Multiple communicate mode, Wi-Fi, TCP/IP, 3G, USB host



Stable operation under strong light source



Advance access function including lock connection, alarm, wiegand input and output

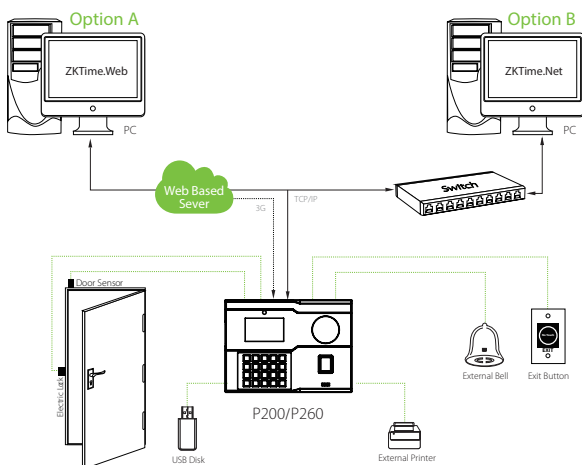


600 Palms, 3,000 Fingerprints,
10000 ID Cards and 100,000 records

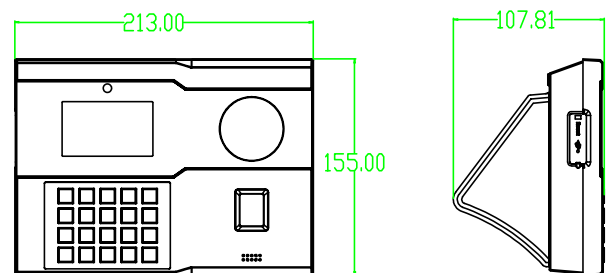
Specifications

Product	P200		P260	
Main	Biometric	Fingerprint and Palm		
	RF Optional	125kHz EM/13.56MHz MF		
Capacity	Max User(1:N)	10,000		
	Max Fingerprint (1:N)	3,000 standard/10,000 Optional		
	Max Palm (1:N)	600		
Interface	TCP/IP	10/100 M		
	PoE Optional	802.3 at 28W		
	Wi-Fi	802.11 B/G/N		
	3G Optional	WCDMA		
	USB	USB 2.0 (Host)		
	RS232	1 port for external printer		
	RS485			1 port for FP reader
	Relay			2 relays
	Wiegand			1ch In & Out
Input			1 Input	
Hardware	LCD	3" Color LCD		
	Sound	24-bit		
	Operating Temp.	0 °C- 45 °C		
	Operating Humidity	20% ~ 80%		
	Power	DC 12V 1.5A	DC 12V 3A	
	Dimensions(W x H x D mm)	213*155*107.81mm		
	Certificates	CE, FCC, RoHS		
Function	Standard	Automatic Status Switch, Self-Service Query, DST, T9 Input 9 Digit User ID, Scheduled Bell, Photo ID Lock, sensor, Exit button		
	Optional	ID/MF, ADMS		
Compatibility	ZKTime.net 3.0, ZKTime.web 2.0, ZKTime 5.0, ZKAccess 3.5			

Configuration



Dimensions (mm)



ZKTECO CO.,LTD.
E-mail: sales@zkteco.com
www.zkteco.com

© Copyright 2017. ZKTECO CO.,LTD. ZKTeco Logo is a registered trademark of ZKTeco or a related company. All other product and company names mentioned are used for identification purposes only and may be the trademarks of their respective owners. All specifications are subject to change without notice. All rights reserved.

